



STIE (Sekolah Tinggi Ilmu Ekonomi) Malangkuçwara

Jl. Terusan Candi Kalasan, Malang, Jawa Timur
 phone +62 0341 481913, fax +62 0341 495619
 email info@stie-mce.ac.id, www.stie-mce.ac.id

printed:
 2020-09-11 19:18:58
 verification:
 d579289

Log Bimbingan Skripsi

Nama Mahasiswa : MARIA GRACIA THRESNA MANEK
 NPK : A.2014.1.33010
 Nama Dosen : Drs.NANANG PURWANTO, Ak., MM., MSA. CA
 NIK : 202.710.235

No.	Tahap	Tanggal	Keterangan	Maret 2020
1	1	18-03-2020	Pengajuan Judul	
2	1	23-03-2020	Pengajuan Bab 1	
No.	Tahap	Tanggal	Keterangan	April 2020
3	1	02-04-2020	Revisi Bab 1	
4	1	14-04-2020	Pengajuan Revisi Bab1	
5	1	20-04-2020	Acc Bab 1	
No.	Tahap	Tanggal	Keterangan	Mei 2020
6	1	08-05-2020	Pengajuan Bab 2	
7	1	14-05-2020	Revisi Bab 2	
No.	Tahap	Tanggal	Keterangan	Juni 2020
8	1	08-06-2020	Pengajuan Revisi Bab 2	
9	1	15-06-2020	Revisi Bab 2	
10	1	22-06-2020	Acc Bab 2	
11	2	30-06-2020	Pengajuan Bab 4	
No.	Tahap	Tanggal	Keterangan	Juli 2020
12	2	06-07-2020	Revisi Bab 4	
13	2	13-07-2020	Pengajuan Revisi Bab 4	
14	2	24-07-2020	Acc Bab 4 dan Bab 5	

Keterangan: Tahap 1 (Bab 1-3) dan Tahap 2 (Bab 4-5)

Hasil Perhitungan Laba (X1)
Laba Sebelum Pajak/Total Asset

KETERANGAN	Darya-Varia Laboratoria Tbk				
	2014	2015	2016	2017	2018
Laba sebelum Pajak	106.757.491	144.437.708	214.417.058	226.147.921	272.843.904
Total asset	1.241.239.780	1.376.278.237	1.531.365.558	1.640.886.147	1.682.821.739
Laba	0,086008757	0,104948043	0,1400169	0,137820605	16,21347631
KETERANGAN	Indofarma Tbk				
	2014	2015	2016	2017	2018
Laba sebelum Pajak	1.440.337.677	6.565.707.419	-18.921.337.613	-56.816.969.124	-25.298.215.466
Total asset	1.249.763.660.131	1.533.708.564.241	1.381.633.321.120	1.529.874.782.290	1.442.350.608.575
Laba	0,001152488	0,004280935	-0,013694905	-0,037138313	-0,017539574
KETERANGAN	Kimia Farma Tbk				
	2014	2015	2016	2017	2018
Laba sebelum Pajak	315.611.059.635	354.904.735.867	383.025.924.670	449.709.762.422	577.726.327.511
Total asset	2.968.184.626.297	3.434.879.313.034	4.612.562.541.064	6.096.148.972.534	9.460.427.317.681
Laba	0,106331344	0,103323786	0,083039725	0,073769484	0,061067678
KETERANGAN	Kalbe Farma Tbk				
	2014	2015	2016	2017	2018
Laba sebelum Pajak	2.763.700.548.048	2.720.881.244.459	3.091.188.460.230	3.241.186.725.992	3.306.399.669.021
Total asset	12.425.032.367.729	13.696.417.381.439	15.226.009.210.657	16.616.239.416.335	18.146.206.145.369
Laba	0,222430048	0,19865642	0,203020267	0,195061388	0,182208867
KETERANGAN	Merck Tbk				
	2014	2015	2016	2017	2018
Laba sebelum Pajak	205.958.418	193.940.841	214.916.161	205.784.642	198.968.742
Total asset	711.055.830	641.646.818	743.934.894	847.006.544	1.263.113.689
Laba	0,289651543	0,302254816	0,288891088	0,242955197	0,157522433
KETERANGAN	Pyridam Farma Tbk				
	2014	2015	2016	2017	2018
Laba sebelum Pajak	4.211.187.980	4.554.931.095	7.053.407.169	9.599.280.773	11.317.263.776
Total asset	172.736.624.689	159.951.537.229	167.062.795.608	159.563.931.041	187.057.163.854
Laba	0,024379242	0,028476945	0,042220095	0,060159465	0,060501632
KETERANGAN	Tempo Scan Pasific Tbk				
	2014	2015	2016	2017	2018
Laba sebelum Pajak	738.305.933.705	707.110.932.867	718.958.200.369	744.090.262.873	727.700.178.905

Total asset	5.609.556.653.195	6.284.729.099.203	6.585.807.349.438	7.434.900.309.021	7.869.975.060.326
Laba	0,131615737	0,112512556	0,109167815	0,100080732	0,092465373

**Hasil Perhitungan Arus kas (X2)
Jumlah Arus Kas Operasi/ Total asset**

KETERANGAN	Darya-Varia Laboratoria Tbk				
	2014	2015	2016	2017	2018
Arus Kas Operasional	104.436.317	214.166.823	187.475.539	230.738.193	226.147.921
Total Aset	1.241.239.780	1.376.278.237	1.531.365.558	1.640.886.147	1.682.821.739
Arus Kas	0,084138713	0,155613027	0,122423766	0,140618039	0,134386142
KETERANGAN	Indofarma Tbk				
	2014	2015	2016	2017	2018
Arus Kas Operasional	148.726.901.608	134.284.985.659	-317.962.543.661	147.184.447.849	-70.390.895.931
Total Aset	1.249.763.660.131	1.533.708.564.241	1.381.633.321.120	1.529.874.782.290	1.442.350.608.575
Arus Kas	0,119004022	0,087555738	-0,23013526	0,096206859	-0,048802902
KETERANGAN	Kimia Farma Tbk				
	2014	2015	2016	2017	2018
Arus Kas Operasional	286.309.255.381	175.966.862.349	198.050.928.789	5.241.243.654	258.254.551.890
Total Aset	2.968.184.626.297	3.434.879.313.034	4.612.562.541.064	6.096.148.972.534	9.460.427.317.681
Arus Kas	0,096459382	0,051229416	0,042937289	0,000859763	0,027298402
KETERANGAN	Kalbe Farma Tbk				
	2014	2015	2016	2017	2018
Arus Kas Operasional	2.316.125.821.045	2.316.125.821.045	2.159.833.281.176	2.008.316.536.066	2.770.775.949.459
Total Aset	12.425.032.367.729	13.696.417.381.439	15.226.009.210.657	16.616.239.416.335	18.146.206.145.369
Arus Kas	0,186408031	0,169104501	0,141851568	0,120864685	0,152691749
KETERANGAN	Merck Tbk				
	2014	2015	2016	2017	2018
Arus Kas Operasional	289.725.783	203.711.206	169.161.270	195.831.865	168.964.859
Total Aset	711.055.830	641.646.818	743.934.894	847.006.544	1.263.113.689
Arus Kas	0,407458558	0,31748183	0,227387197	0,231204666	0,133768528
KETERANGAN	Pyridam Farma Tbk				
	2014	2015	2016	2017	2018
Arus Kas Operasional	1.472.541.371	15.699.910.434	7.052.759.074	20.930.568.344	4.829.470.105
Total Aset	172.736.624.689	159.951.537.229	167.062.795.608	159.563.931.041	187.057.163.854

Arus Kas	0,008524778	0,09815417	0,042216216	0,131173557	0,025818151
KETERANGAN	Tempo Scan Pasific Tbk				
	2014	2015	2016	2017	2018
Arus Kas Operasional	512.956.089.428	778.361.981.647	491.655.348.447	544.164.330.634	389.088.123.975
Total Aset	2.968.184.626.297	3.434.879.313.034	4.612.562.541.064	6.096.148.972.534	9.460.427.317.681
Arus Kas	0,172818121	0,226605336	0,1065905	0,089263621	0,041127965

Descriptives

Descriptive Statistics

	N	Minimum	Maximum	Mean	Std. Deviation
Rasio Laba	35	-,037	,302	,11517	,089187
Rasio Arus Kas	35	-,048	,407	,14794	,126677
Financial Distress	35	1,171	3,487	2,30814	,678972
Valid N (listwise)	35				

Asumsi Klasik

Normalitas

One-Sample Kolmogorov-Smirnov Test

		Rasio Laba	Rasio Arus Kas	Financial Distress
N		35	35	35
Normal Parameters ^{a,b}	Mean	,11517	,14794	2,30814
	Std. Deviation	,089187	,126677	,678972
Most Extreme Differences	Absolute	,114	,125	,149
	Positive	,114	,125	,117
	Negative	-,059	-,085	-,149
Kolmogorov-Smirnov Z		,676	,739	,882
Asymp. Sig. (2-tailed)		,752	,645	,418

a. Test distribution is Normal.

b. Calculated from data.

One-Sample Kolmogorov-Smirnov Test

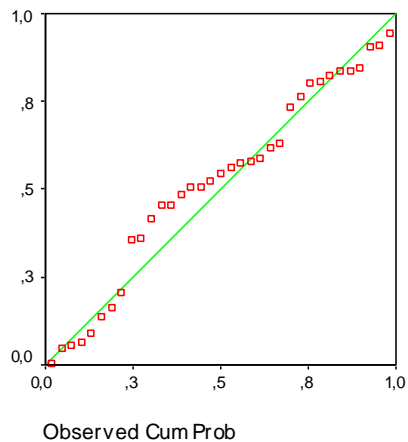
		Unstandardized Residual
N		35
Normal Parameters ^{a,b}	Mean	,000000
	Std. Deviation	,37018842
Most Extreme Differences	Absolute	,139
	Positive	,062
	Negative	-,139
Kolmogorov-Smirnov Z		,820
Asymp. Sig. (2-tailed)		,512

a. Test distribution is Normal.

b. Calculated from data.

Normal P-P Plot of Regression S

Dependent Variable: Financial Distress



Autokorelasi

Model Summary^b

Model	Durbin-Watson
1	2,165 ^a

a. Predictors: (Constant), Rasio Arus Kas, Rasio Laba

b. Dependent Variable: Financial Distress

Multikolinieritas

Coefficients^a

Model		Collinearity Statistics	
		Tolerance	VIF
1	Rasio Laba	,350	2,860
	Rasio Arus Kas	,350	2,860

a. Dependent Variable: Financial Distress

Heteroskedastisitas

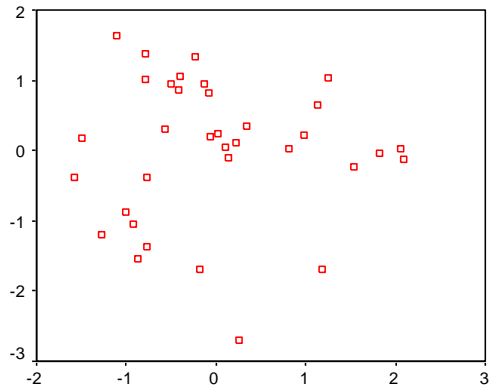
Coefficients^a

Model		Unstandardized Coefficients		Standardized Coefficients	t	Sig.
		B	Std. Error	Beta		
1	(Constant)	,375	,065		5,813	,000
	Rasio Laba	,039	,747	,015	,053	,958
	Rasio Arus Kas	-,679	,526	-,361	-1,291	,206

a. Dependent Variable: ABSRESID

Scatterplot

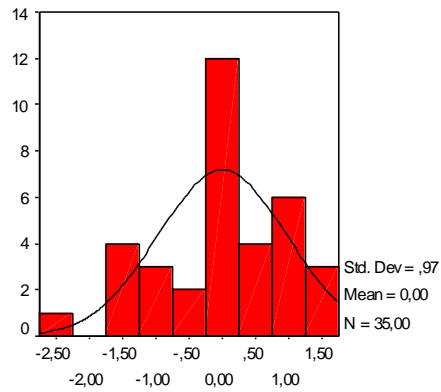
Dependent Variable: Financial Distres



Regression Standardized Predicted Value

Histogram

Dependent Variable: Financial Distres



Regression Standardized Residual

Regression

Model Summary

Model	R	R Square	Adjusted R Square	Std. Error of the Estimate
1	,838 ^a	,703	,684	,381581

a. Predictors: (Constant), Rasio Arus Kas, Rasio Laba

ANOVA^a

Model		Sum of Squares	df	Mean Square	F	Sig.
1	Regression	11,015	2	5,507	37,824	,000 ^a
	Residual	4,659	32	,146		
	Total	15,674	34			

a. Predictors: (Constant), Rasio Arus Kas, Rasio Laba

b. Dependent Variable: Financial Distress

Coefficients^a

Model		Unstandardized Coefficients		Standardized Coefficients	t	Sig.
		B	Std. Error	Beta		
1	(Constant)	1,565	,107		14,597	,000
	Rasio Laba	4,141	1,241	,544	3,337	,002
	Rasio Arus Kas	1,798	,874	,336	2,058	,048

a. Dependent Variable: Financial Distress