

LAMPIRAN

Data Kepemilikan Manajerial Perusahaan Pertambangan Di Bursa Efek Indonesia 2013-2015 (dalam persentase)

No	Kode	Nama Perusahaan	Tahun		
			2013	2014	2015
1	ADRO	Adaro Energy Tbk	15,2	15,1	15,2
2	ANTM	Aneka Tambang (Persero) Tbk	0,0	0,0	0,0
3	ARII	Atlas Resources Tbk	0,0	0,0	0,0
4	BYAN	Bayan Resources Tbk	65,0	22,0	15,0
5	CTTH	Citatah Tbk	6,6	16,6	6,6
6	DOID	Delta Dunia Makmur Tbk	0,1	0,0	40,1
7	ITMG	Indo Tambangraya Megah Tbk	0,0	21,0	10,0
8	KKGI	Resource Alam Indonesia Tbk	33,0	44,0	43,0
9	MITI	Mitra Investindo Tbk	39,0	9,0	0,0
10	PTBA	Tambang Batubara Bukit Asam (Persero) Tbk	10,0	2,0	12,0
11	TINS	Timah (Persero) Tbk	0,0	0,0	0,0
12	HRUM	Harum Energy Tbk	0,0	0,0	0,0
13	ARTI	Ratu Prabu Energi Tbk	0,0	0,0	0,0
14	CITA	Cita Mineral Investindo Tbk	0,0	0,0	0,0
15	DKFT	Central Omega Resource Tbk	0,0	0,0	0,0
16	INCO	Vale Indonesia Tbk	0,0	0,0	0,0
17	PTRO	Petrosea Tbk	0,0	0,0	0,0

**Data Leverage Perusahaan Pertambangan
Di Bursa Efek Indonesia 2013-2015
(dalam persentase)**

No	Kode	Nama Perusahaan	Tahun		
			2013	2014	2015
1	ADRO	Adaro Energy Tbk	111,0	97,0	78,0
2	ANTM	Aneka Tambang (Persero) Tbk	70,9	84,8	5,7
3	ARII	Atlas Resources Tbk	8,0	6,0	9,0
4	BYAN	Bayan Resources Tbk	248,0	355,0	445,0
5	CTTH	Citatah Tbk	12,6	356,1	109,6
6	DOID	Delta Dunia Makmur Tbk	14,0	1091,0	878,0
7	ITMG	Indo Tambangraya Megah Tbk	244,0	45,0	41,0
8	KKGI	Resource Alam Indonesia Tbk	145,0	38,0	28,4
9	MITI	Mitra Investindo Tbk	40,7	32,5	4,4
10	PTBA	Tambang Batubara Bukit Asam (Persero) Tbk	54,6	70,8	81,9
11	TINS	Timah (Persero) Tbk	61,0	74,0	72,0
12	HRUM	Harum Energy Tbk	21,7	22,7	10,8
13	ARTI	Ratu Prabu Energi Tbk	70,0	83,3	45,3
14	CITA	Cita Mineral Investindo Tbk	879,8	4,6	6,4
15	DKFT	Central Omega Resource Tbk	1481,0	5,0	4,2
16	INCO	Vale Indonesia Tbk	33,1	30,7	24,8
17	PTRO	Petrosea Tbk	157,7	142,6	8,6

**Data Ukuran Perusahaan Pertambangan
Di Bursa Efek Indonesia 2013-2015
(dalam persentase)**

No	Kode	Nama Perusahaan	Tahun		
			2013	2014	2015
1	ADRO	Adaro Energy Tbk	7,9	7,9	7,9
2	ANTM	Aneka Tambang (Persero) Tbk	7,3	7,3	7,5
3	ARII	Atlas Resources Tbk	6,6	6,6	6,7
4	BYAN	Bayan Resources Tbk	10,3	10,2	10,1
5	CTTH	Citatah Tbk	8,5	8,6	8,8
6	DOID	Delta Dunia Makmur Tbk	7,1	10,1	10,1
7	ITMG	Indo Tambangraya Megah Tbk	10,2	7,2	7,2
8	KKGI	Resource Alam Indonesia Tbk	9,1	9,1	9,1
9	MITI	Mitra Investindo Tbk	8,2	8,6	7,4
10	PTBA	Tambang Batubara Bukit Asam (Persero) Tbk	8,2	8,3	8,4
11	TINS	Timah (Persero) Tbk	8,0	8,1	8,1
12	HRUM	Harum Energy Tbk	9,8	9,7	9,7
13	ARTI	Ratu Prabu Energi Tbk	9,2	8,2	9,4
14	CITA	Cita Mineral Investindo Tbk	9,6	7,4	6,7
15	DKFT	Central Omega Resource Tbk	9,2	7,1	8,1
16	INCO	Vale Indonesia Tbk	7,4	7,5	7,5
17	PTRO	Petrosea Tbk	6,8	6,8	6,8

**Data Kinerja Perusahaan (ROA) Pertambangan
Di Bursa Efek Indonesia 2013-2015
(dalam persentase)**

No	Kode	Nama Perusahaan	Tahun		
			2013	2014	2015
1	ADRO	Adaro Energy Tbk	4,4	2,9	7,5
2	ANTM	Aneka Tambang (Persero) Tbk	2,0	-3,5	-5,5
3	ARII	Atlas Resources Tbk	-3,4	-7,3	-7,4
4	BYAN	Bayan Resources Tbk	20,5	20,0	18,7
5	CTTH	Citatah Tbk	0,2	12,3	3,3
6	DOID	Delta Dunia Makmur Tbk	-2,7	21,7	19,0
7	ITMG	Indo Tambangraya Megah Tbk	17,0	15,0	5,0
8	KKGI	Resource Alam Indonesia Tbk	19,0	8,0	15,8
9	MITI	Mitra Investindo Tbk	14,0	2,1	-72,1
10	PTBA	Tambang Batubara Bukit Asam (Persero) Tbk	15,6	13,6	12,1
11	TINS	Timah (Persero) Tbk	7,0	7,0	1,0
12	HRUM	Harum Energy Tbk	8,7	10,0	-5,1
13	ARTI	Ratu Prabu Energi Tbk	4,0	2,0	1,0
14	CITA	Cita Mineral Investindo Tbk	18,0	-14,0	-12,0
15	DKFT	Central Omega Resource Tbk	22,0	-4,0	-2,0
16	INCO	Vale Indonesia Tbk	2,0	2,0	2,0
17	PTRO	Petrosea Tbk	3,4	0,5	-3,0

Uji Normalitas

One-Sample Kolmogorov-Smirnov Test

		Kepemilikan Manajerial	Leverage	Ukuran Perusahaan	Kinerja
N		51	51	51	51
Normal Parameters ^{a,b}	Mean	8.6373	157.7510	8.2667	4.2804
	Std. Deviation	14.86948	296.84189	1.13131	14.28059
Most Extreme Differences	Absolute	.325	.327	.124	.149
	Positive	.325	.327	.124	.107
	Negative	-.281	-.302	-.083	-.149
Kolmogorov-Smirnov Z		.932	.708	.882	1.062
Asymp. Sig. (2-tailed)		.350	.699	.417	.210

a. Test distribution is Normal.

b. Calculated from data.

One-Sample Kolmogorov-Smirnov Test

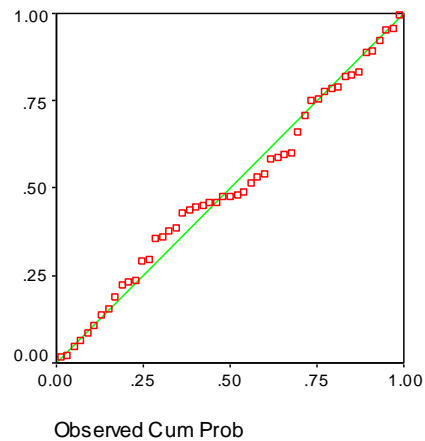
		Standardized Residual
N		51
Normal Parameters ^{a,b}	Mean	.0000000
	Std. Deviation	.96953595
Most Extreme Differences	Absolute	.080
	Positive	.080
	Negative	-.075
Kolmogorov-Smirnov Z		.573
Asymp. Sig. (2-tailed)		.898

a. Test distribution is Normal.

b. Calculated from data.

Normal P-P Plot of Regression Standard

Dependent Variable: Kinerja



Uji Autokorelasi

Model Summary^b

Model	Durbin-Watson
1	1.964 ^a

- a. Predictors: (Constant), Ukuran Perusahaan, Kepemilikan Manajerial, Leverage
 b. Dependent Variable: Kinerja

Uji Multikolinieritas

Coefficients^a

Model		Collinearity Statistics	
		Tolerance	VIF
1	Kepemilikan Manajerial	.973	1.027
	Leverage	.974	1.027
	Ukuran Perusahaan	.996	1.004

- a. Dependent Variable: Kinerja

Uji Heteroskedastisitas

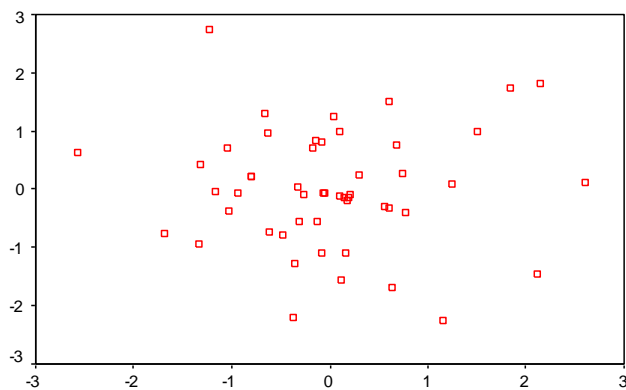
Coefficients^a

Model		Unstandardized Coefficients		Standardized Coefficients	t	Sig.
		B	Std. Error	Beta		
1	(Constant)	.671	.112		5.966	.000
	Kepemilikan Manajerial	.00641	.006	.151	1.052	.298
	Leverage	-.00005	.000	-.025	-.171	.865
	Ukuran Perusahaan	-.08982	.093	-.140	-.969	.338

a. Dependent Variable: ABSRESID

Scatterplot

Dependent Variable: Kinerja



Regression Standardized Predicted Value

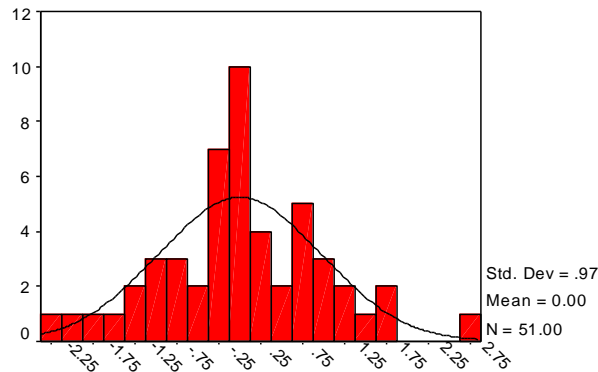
Descriptives

Descriptive Statistics

	N	Minimum	Maximum	Mean	Std. Deviation
Kepemilikan Manajerial	51	.00	65.00	8.6373	14.86949
Leverage	51	4.20	1481.00	157.7510	296.84189
Ukuran Perusahaan	51	6.60	10.30	8.2667	1.13131
Kinerja	51	-72.10	22.00	4.2804	14.28059
Valid N (listwise)	51				

Histogram

Dependent Variable: Kinerja



Regression Standardized Residual

Regression

Model Summary

Model	R	R Square	Adjusted R Square	Std. Error of the Estimate
1	.624 ^a	.390	.351	11.50802

a. Predictors: (Constant), Ukuran Perusahaan, Kepemilikan Manajerial, Leverage

ANOVA^b

Model		Sum of Squares	df	Mean Square	F	Sig.
1	Regression	3972.332	3	1324.111	9.998	.000 ^a
	Residual	6224.428	47	132.435		
	Total	10196.760	50			

a. Predictors: (Constant), Ukuran Perusahaan, Kepemilikan Manajerial, Leverage

b. Dependent Variable: Kinerja

Coefficients^a

Model		Unstandardized Coefficients		Standardized Coefficients	t	Sig.
		B	Std. Error	Beta		
1	(Constant)	-31.069	14.181		-2.191	.033
	Kepemilikan Manajerial	.250	.121	.260	2.071	.044
	Leverage	.013	.006	.278	2.105	.041
	Ukuran Perusahaan	3.760	1.810	.298	2.078	.043

a. Dependent Variable: Kinerja